

Schedule 1

Item 1 Description of Agreement Area

A. External boundary description

The agreement area covers all the land and waters within that part of Lot 3 on BI22 (Nockatunga Pastoral Holding) located within the Native Title Determination Application QUD80/2009 Kullilli People (QC2009/001), further described as that part of that lot southeast of the line described by the following coordinate points:

Longitude° (East)	Latitude° (South)
143.318651	27.261704
143.292739	27.274992
143.276129	27.283629
143.245566	27.300239
143.214339	27.318178
143.181784	27.334124
143.163845	27.343426
143.137269	27.356049
143.114015	27.368008
143.087439	27.379303
143.061527	27.393256
143.039602	27.405215
143.014354	27.417174
143.002395	27.423154
142.985785	27.429133
142.965853	27.435778
142.949243	27.442422
142.941935	27.443086
142.924660	27.433120

then north westerly to the centreline of Wilson River at Longitude 142.921272° East,; then generally south westerly along the centreline of that river to Longitude 142.595276° East, being approximately 700m south east of the Noccundra Hotel; then generally south westerly passing through the following coordinate points:

Longitude° (East)	Latitude° (South)
142.591279	27.879727
142.586739	27.889416
142.583232	27.893481
142.573075	27.907402
142.562898	27.920171
142.551441	27.934105
142.536210	27.956133
142.524730	27.968915

Longitude° (East)	Latitude° (South)
142.514559	27.982831
142.503763	27.998115
142.497787	28.009503
142.484973	28.028377
142.468840	28.049840
142.456751	28.066627
142.447560	28.085897
142.434852	28.110751
142.421832	28.133307
142.406542	28.159353
142.392700	28.180308
142.375484	28.201546
142.357811	28.226243
142.341584	28.245618
142.318459	28.271089
142.304688	28.283973
142.293441	28.297961
142.287699	28.305195
142.274598	28.326355

Note

Data Reference and source

- Agreement boundary data compiled by National Native Title Tribunal based on data sourced from Department of Natural Resources and Mines Qld (August 2013).
- Cadastre data sourced from Department of Natural Resources and Mines Qld (August 2013).

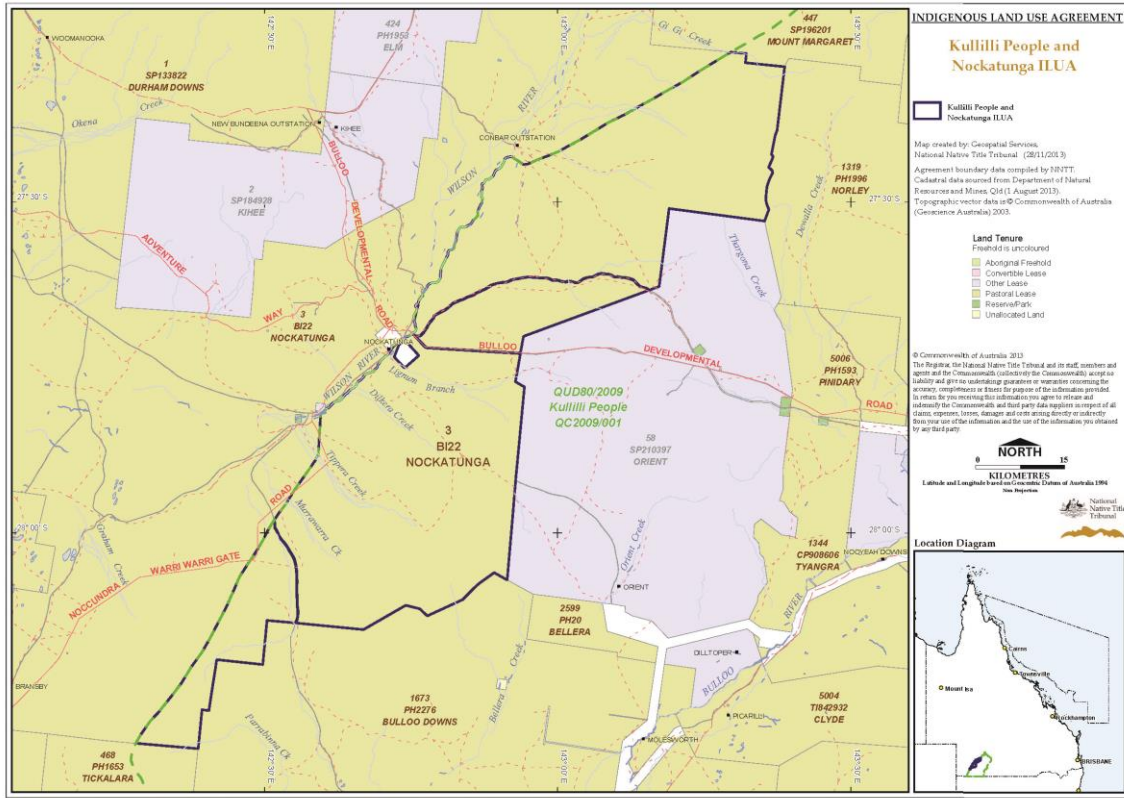
Reference datum

Geographical coordinates have been provided by the NNTT Geospatial Services and are referenced to the Geocentric Datum of Australia 1994 (GDA94), in decimal degrees and are based on the spatial reference data acquired from the various custodians at the time.

Use of Coordinates

Where coordinates are used within the description to represent cadastral or topographical boundaries or the intersection with such, they are intended as a guide only. As an outcome to the custodians of cadastral and topographic data continuously recalculating the geographic position of their data based on improved survey and data maintenance procedures, it is not possible to accurately define such a position other than by detailed ground survey.

B. Map



- Item 2 Description of Lease**
 Pastoral Holding 15/455 comprising Lot 3 on BI22
- Item 3 Description of Lessee**
 Consolidated Pastoral Company Pty Ltd ACN 010 080 654